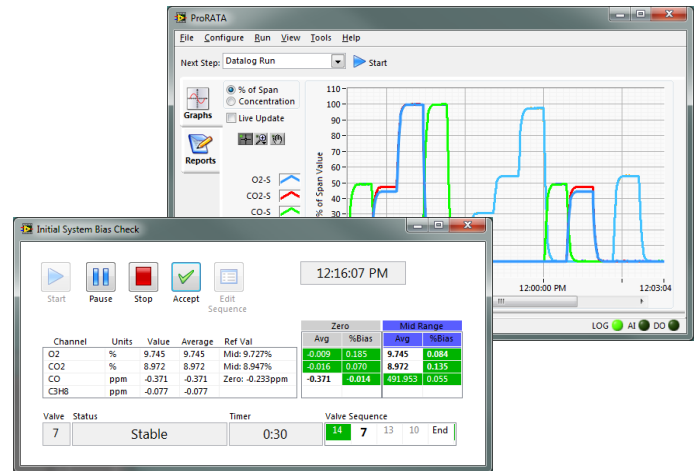


Emissions Audit Test System

- Automates and simplifies several complex calibration and testing protocols.
- Modular architecture allows use with a wide range of both new and legacy acquisition hardware.
- User-friendly configuration saves time in the field by reducing repetitive setup operations.



Overview

A leading provider of EPA-mandated emissions testing asked kDy to create a data acquisition platform to completely automate testing of stack emissions at power plants and other greenhouse gas producing facilities.

Standardize Process

The customer was using different systems and procedures in different locations. Standardizing the software leads to improvements in quality and reduced training time. In order to keep costs low, kDy designed the software to be able to operate with several different legacy hardware setups.

Regulatory Compliance

Regulatory requirements present challenges including record keeping and extra procedure. kDy has the expertise to deliver solutions that take the complexity out of these problems. We have experience with a number of regulatory environments including EPA, FDA, and DoD.

Mobile Testing

The system is installed in truck or trailer-based mobile laboratories. kDy has designed and installed acquisition hardware and test instrumentation for a number of mobile applications.

