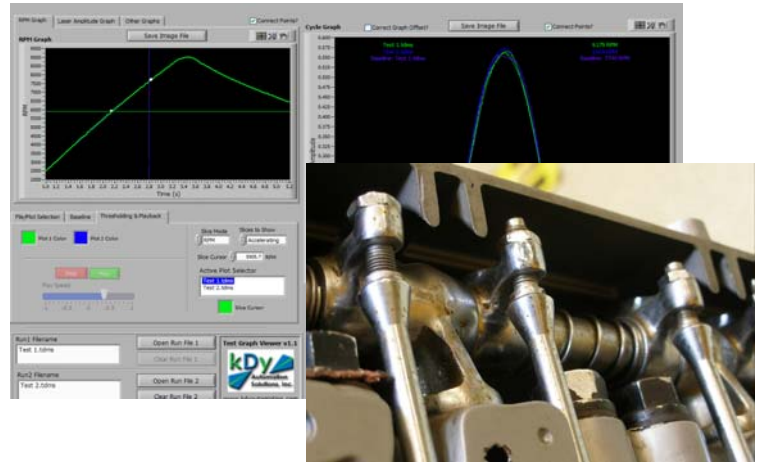


## Valve Train Test System

- High speed data acquisition system for detailed measurements at high RPM (100kHz each channel)
- Laser, proximity sensor gauge, strain gauge and load cell measurements available
- Test Viewer permits analysis of sensor data directly against camshaft position.
- Complete, recipe-driven RPM sequence testing
- Animation playback of cycle data



## Overview

A championship NHRA™ drag-racing team approached kDy about increasing the capability of their valve train testing to include many different types of sensors and more robust analysis of collected data.

## Machine Control and Data Acquisition

The kDy custom solution included a robust user interface for recipe entry and machine control, a state-of-the-art data acquisition system that including a high-performance A/D converters, signal conditioning for strain gauges, load cells and proximity sensors, and digital channels for software control of console switches. The system is based on National Instruments™ PXI based data acquisition hardware.

## Data Viewing and Analysis

kDy developed a unique "slice cursor" feature the user may scroll through run data by time or RPM and observe one full cycle of data for each sensor at a specific RPM value. Using the animation and playback feature, whole runs may be viewed as a "movie."

